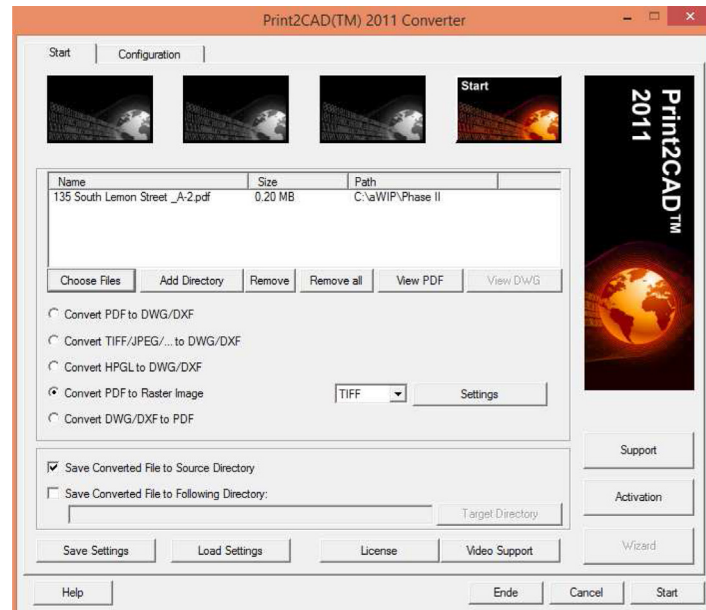


1. Convert PDF into TIFF File using Print2CAD

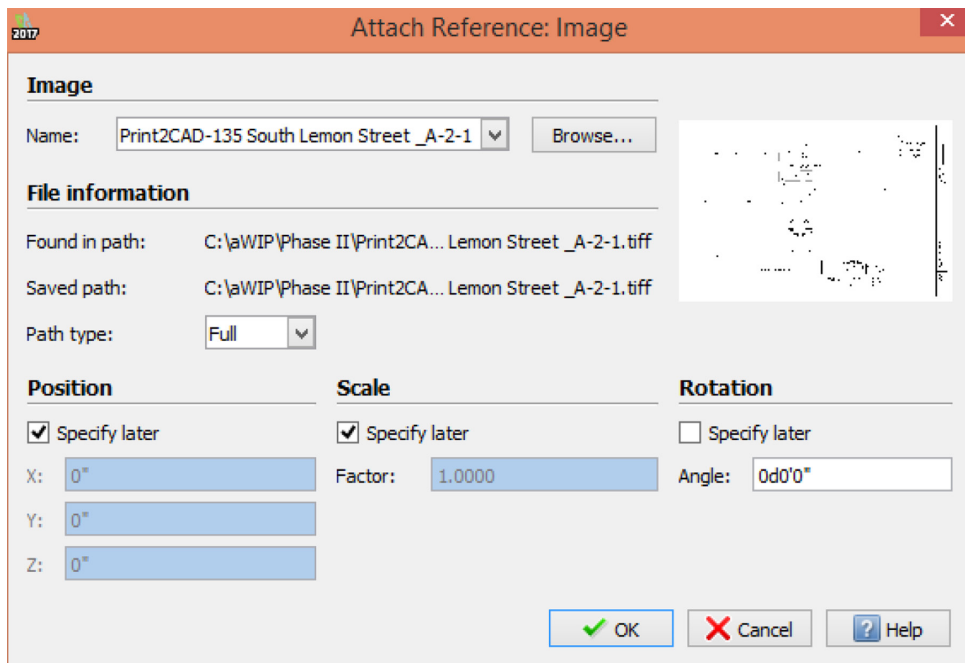
If the PDF is multiple pages, and only one page is needed, click on Settings and enter the appropriate page number in the last field labeled "Pages for Conversion".

2. Open Draftsight and click File> New. Select template of appropriate salesperson.



3. Insert previously created TIFF image into the model space.

- Type ATTACHIMAGE, and then Enter.
- Select TIFF image from directory (this will be the same folder where source PDF was saved)



4. Click Specify later, and then Enter.

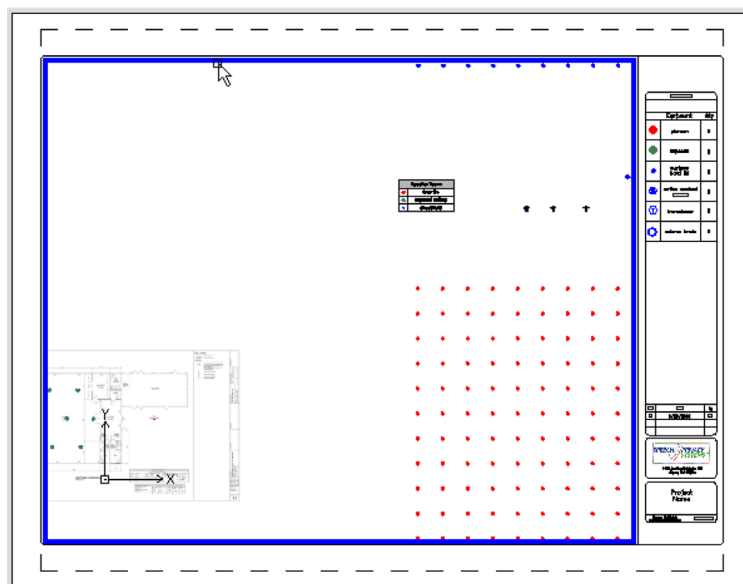
- The Command window will guide the user. In this case "Specify position>>" prompts user to click inside the model space. A rectangle will appear representing the size the inserted image will be, click again to complete.

5. Scale image using SCALE command.

- If there are no defined distances on the image, a door may be used to scale the image. Scale the door to 3' (36") by first measuring the door using the DI command.
- For example, if the door currently measures 11", divide this number into 36 (width desired in inches) as follows:  $36/11=3.272$ .
- The drawing needs to be scaled by 3.272 for the doors to measure 36".

6. Place grid on drawing in areas requested by salesperson. Default coverage is 15'x15'. Grids of 16' and 15' are located in all templates for you to copy and paste over drawing. If a speaker lands on a wall, just move the speaker slightly so that nothing is above a wall or doorway.

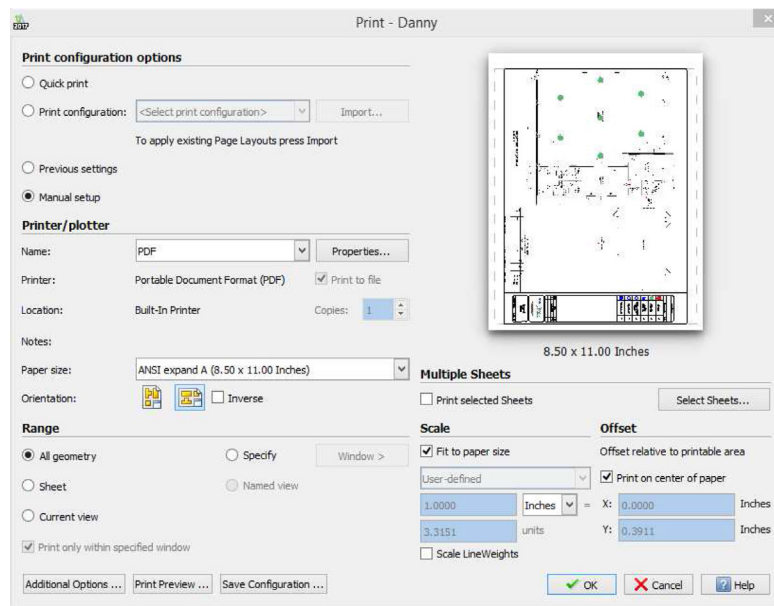
7. Once design is completed, print the layout with SPS template by clicking on the layout tab (tab with salespersons name). Double click inside viewport (dark blue box will appear when viewport is active).



- Type Z and hit space. Using the mouse, draw a box around the area you want to print. The program will center the drawing in the dark blue space above. Double click outside of the viewport to deactivate viewport.
- Enter the appropriate number of speakers in the Qty column and double click Date to enter current date.
- Enter customer name in title block.

## 8. Print drawing while in current layout tab.

- Print to PDF using ANSI expand A paper size and settings below.



Save PDF in appropriate folder ("customername" Layout-db)

## Notes:

- Use smaller blue speakers on a tighter grid (10'x10') or (10'x12') for drywall ceilings.
- Use green speakers for flat speakers or exposed areas. Grid space is determined by deck height. Add 3' to ceiling height to find proper speaker distance. For example 10' drop tile with 3' plenum space would be a 16' grid.
- Use flat speakers when there is less than 2' plenum space to hang SPK speakers.
- Also use flat speakers in an open ceiling less than 10' high. If using flat speakers on a 10' ceiling, the grid would be 13'x13' since there is zero plenum space to add into calculation for grid size.

- If using a local copy of Draftsight, save templates in a similar location as below for easy access: C:\Users\gina\AppData\Roaming\DraftSight\17.0.1197\ Template
- Use LI command to count speakers. Using the layers manager, freeze all layers but speaker layers. Type LI and select speakers then hit space. The number will appear under Specify entities>>
- Repeat sequence above when multiple speaker types are used.
- Use M to move speakers. Highlight speakers to move and type M then space. Click speakers again and move to desired location and click again to place.
- Use LINEARPATTERN to create grids other than 15' or 16'. Select the speaker that requires a grid, type LINEARPATTERN and follow instructions in the command line at the bottom of screen.